

The CMRS Process

The NPA Approach to Dealing with Cluster Munitions Remnants

Hans Risser

15 Feb 2018



Norsk Folkehjelp

Contents

- Purpose – Why do we do CMRS?
- History and Application
- The Process
- Lessons Learnt and Challenges
- The Path Forward



Why do we do CMRS?

- SEA has the highest concentration of CMR in the world
- Iraq is estimated to having the 4th highest concentration of CMR in the world
- No accurate estimate
- Treaty Obligations



- There is a need to estimate the extent of the problem:
 - to allow for better planning
 - estimate an end date/state.

History and Application

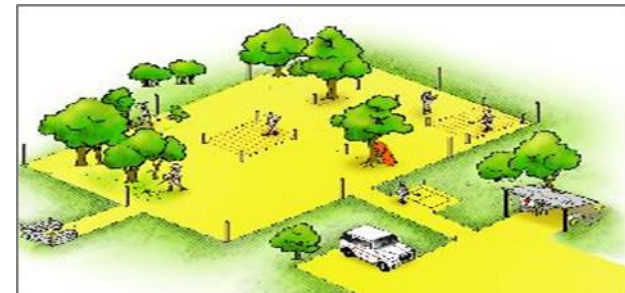
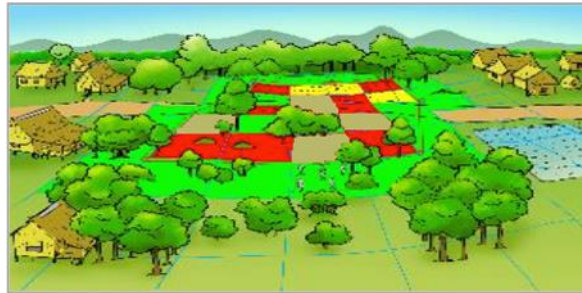
The SEA experience

- Initial focus was on speed – a rapid survey.
- ID the CHA to better utilize clearance resources
- NS Revision and operational direction
- Partnership development.



The Process

- A combination of NTS and TS
- Followed by Clearance



CMRS = NTS + TS

Clearance



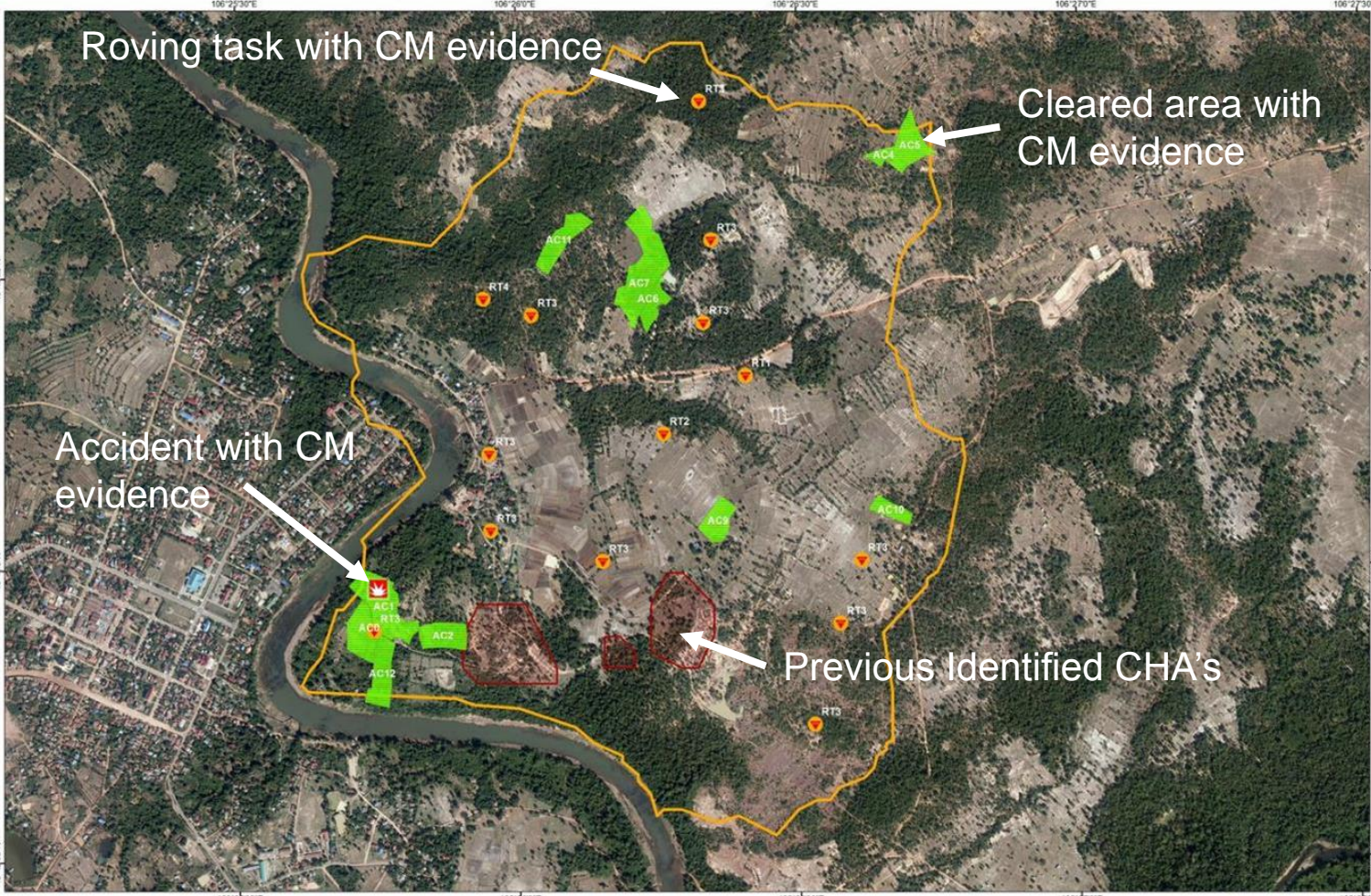
Non-technical Survey

NTS involves review of historical data, village meetings, discussions with key informants and field visits.

The aim is to identify "Evidence Points" for TS.



DESKTOP ASSESSMENT - REVIEW OF HISTORICAL DATA BEFORE NTS



Non-Technical Survey

Compiling data & reporting

NTS report :Internal report to ensure that all villages are covered, not reported to NMAA or IMSMA

Technical Survey (TS) Task generated by NTS:

TS task where one or more evidence points are grouped into one task, not reported to NMAA or IMSMA

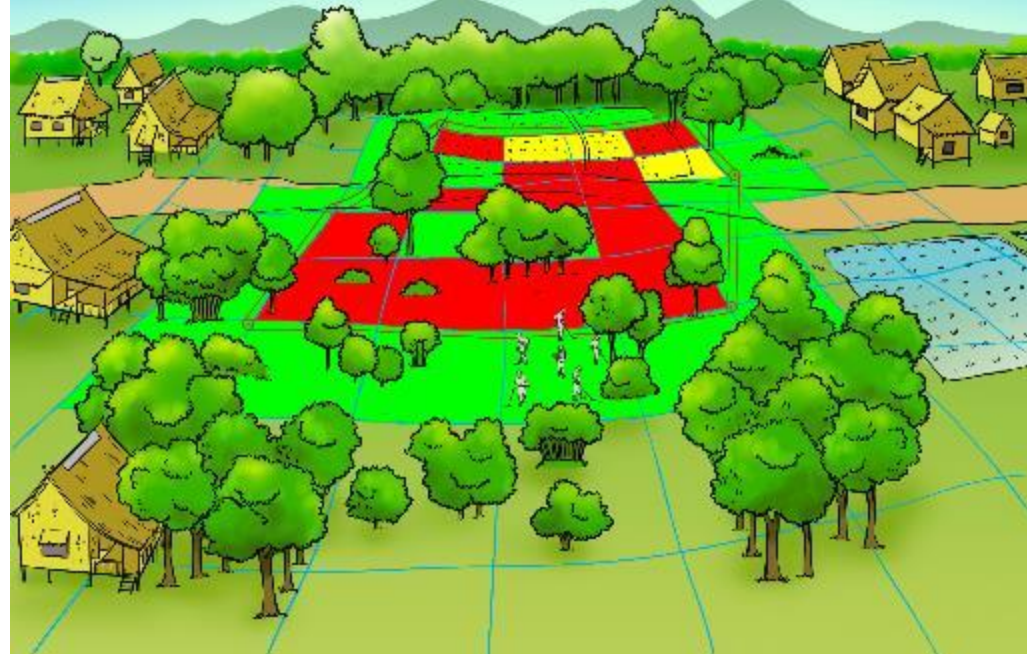
Spot task report of found CM & ERW

Conduct activity, Reported to NMAA and IMSMA



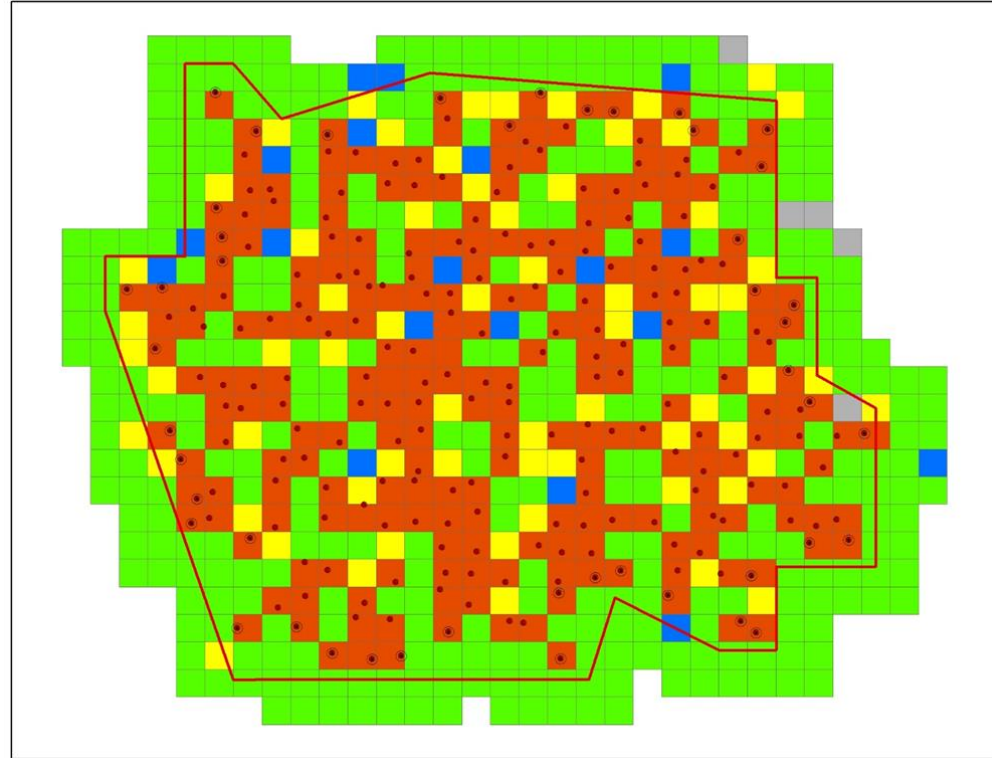
Technical Survey

Based on the information gathered during NTS and the identified EP, detectors are used to establish the cluster munition footprint on the ground and create Confirmed Hazardous Areas (CHA)



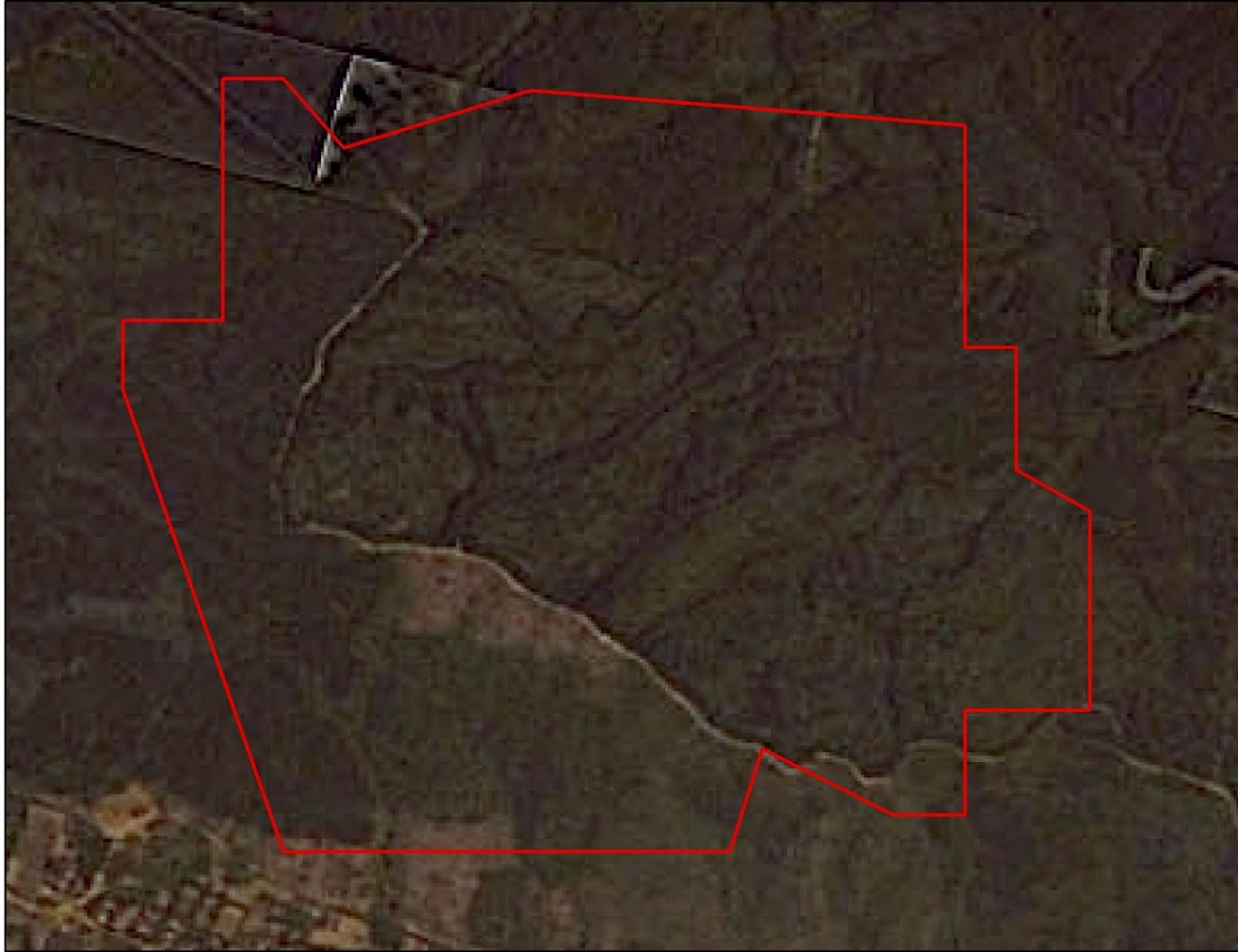
The Process – TS Procedure

- ONLY CHAs, and NO SHAs
- Medically trained staff are compulsory for TS
- Conduct of TS
 - Time in box – TL Confidence
 - Focus on identify CHA boundary
 - CMR located, stop searching and move to next boxes
 - Located items – dispose on daily basis
- Drawing CHA – 50m from last known item, line of best fit.



The Process

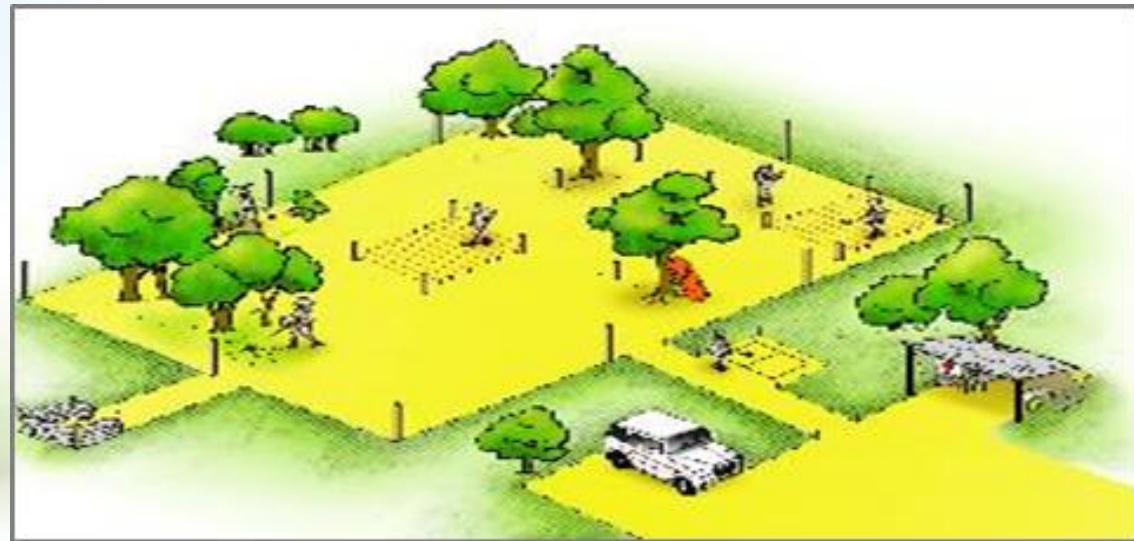
CHA Creation:



Clearance

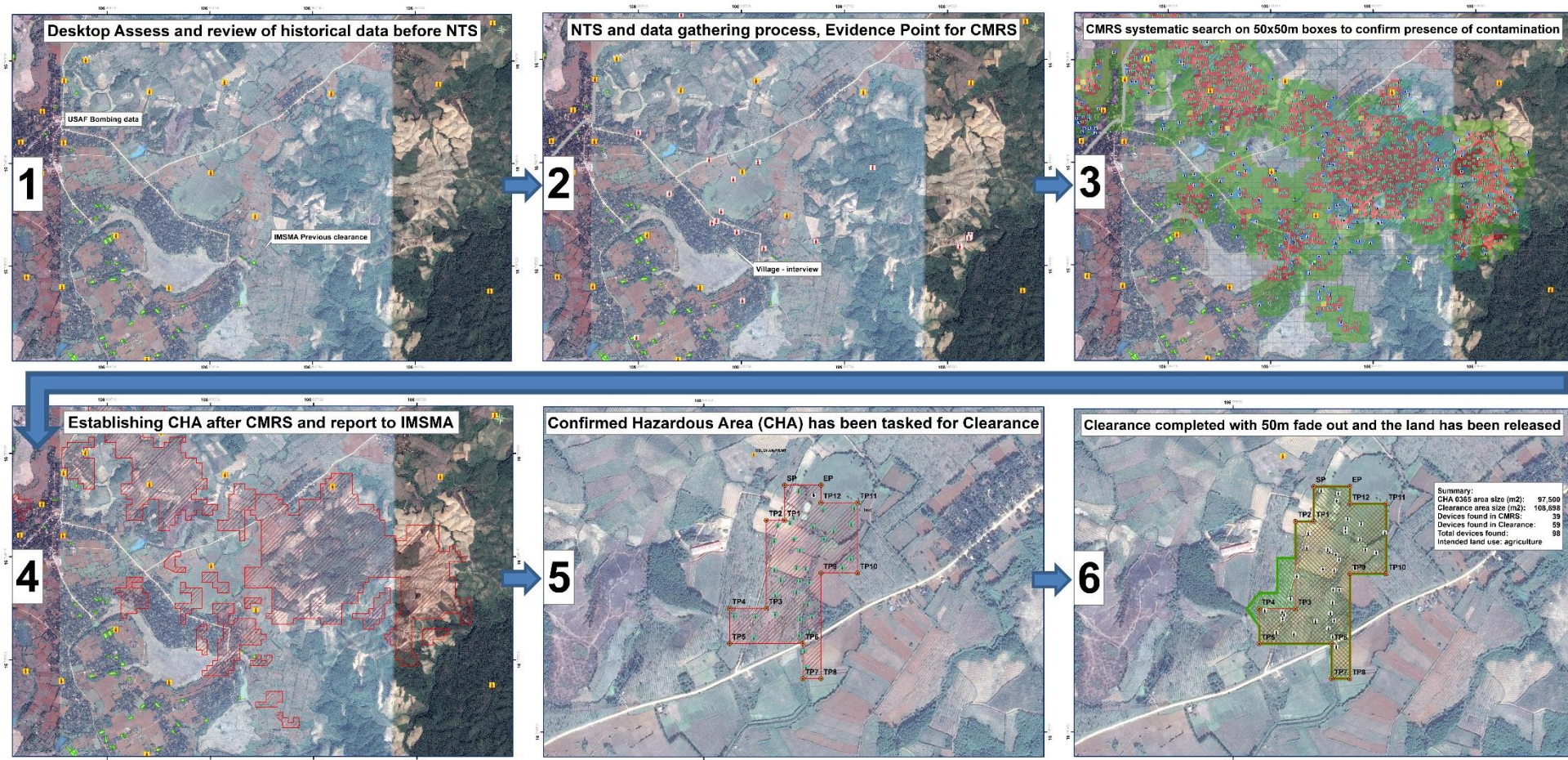
The best form of Quality Management.

Clearance results should feedback to the survey organisation in order to continuously improve.



Norsk Folkehjelp

STAGE OF CLUSTER MUNITION REMNANTS SURVEY (CMRS) PROCESS



Lesson learnt - General

- Speed over Accuracy
 - Too focused on speed when first developed
 - No feedback through clearance.
- Too long time between CMRS and Clearance.
- Stakeholder feedback and coordination is essential to quality.
 - Link to village
 - Clearance is the greatest form of Quality management
- Ownership of the process



Lesson learnt - General

- Information management is key to success.
- Linking location of USAF BD to CHA locations is not possible, But.....
- Can be used to analyze expected type of contamination
- National Standards shall be appropriate.



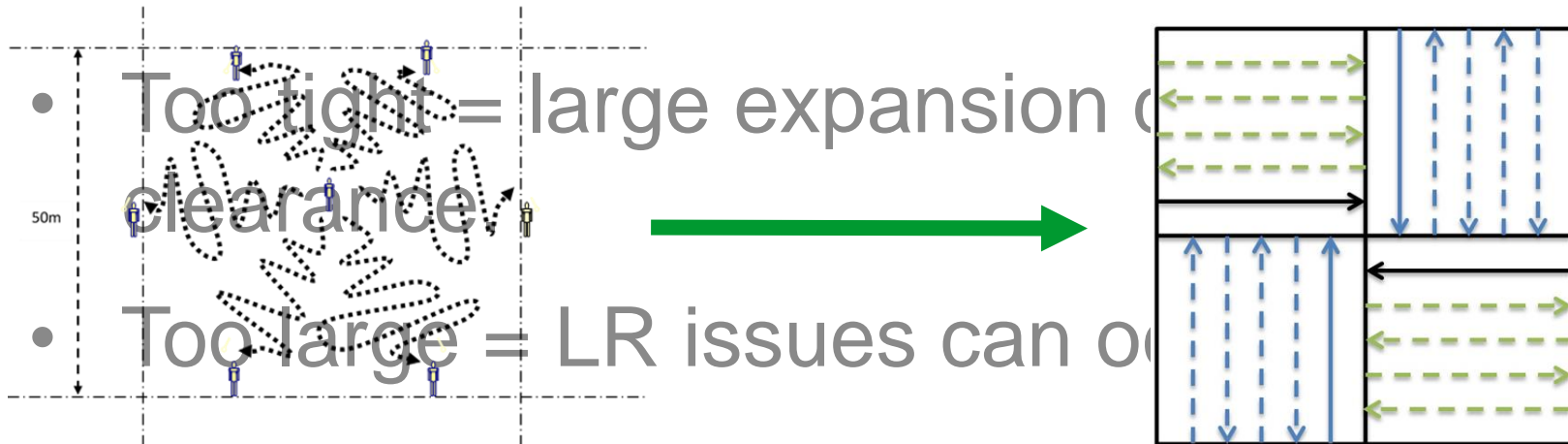
Lesson learnt - NTS

- Incomplete information
 - No quality documentation on, or a lack of accurate & reliable historical data
 - No reporting system of new evidences
- Increase in quality of NTS
- Impact Assessment is not NTS



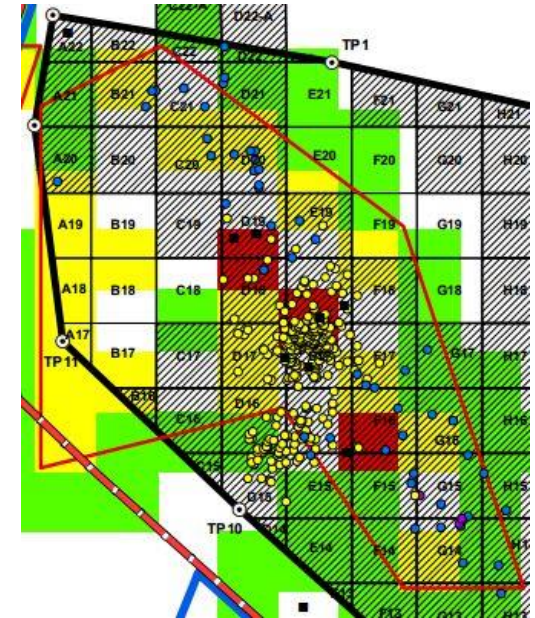
Lesson learnt – TS.

- More structured physical approach.
- CHA created 50m from last known item.



Lesson learnt – TS

- Skipping boxes shall only be conducted when larger CHA's are being identified – not from the start of a task.
- Fragmentation is not enough evidence to base CHA creation
- The focus is on boundaries



Skipping boxes trial



PROJECT RENEW **Norwegian People's Aid Vietnam**

CMRS 1226 - PHASE 1
Thôn Linh An, Xã Triệu Trạch, Huyện Triệu Phong

Bảng chứng từ ST_17_0050
Số đầu/Giá
Khai báo/Đã
Ngày/Đã
Điểm số/Đã
Số lượng phát hiện
Số CA
Số CA

PROJECT RENEW **Norwegian People's Aid Vietnam**

CMRS 1226 - PHASE 2
Thôn Linh An, Xã Triệu Trạch, Huyện Triệu Phong

Bảng chứng từ ST_17_0050
Số đầu/Giá
Khai báo/Đã
Ngày/Đã
Điểm số/Đã
Số lượng phát hiện
Số CA
Số CA

PROJECT RENEW **Norwegian People's Aid Vietnam**

CMRS 1226 - PHASE 3
Thôn Linh An, Xã Triệu Trạch, Huyện Triệu Phong

Bảng chứng từ ST_17_0050
Số đầu/Giá
Khai báo/Đã
Ngày/Đã
Điểm số/Đã
Số lượng phát hiện
Số CA
Số CA

X Số lượng phát hiện COVID-19
 - Đường giao thông liên thôn
 - Đường giao thông liên xã
 - Đường giao thông liên huyện
 - Đường giao thông liên tỉnh
 - Đường giao thông liên quốc gia
 - Đường giao thông liên khu vực
 - Đường giao thông liên vùng
 - Đường giao thông liên nước ngoài
 - Đường giao thông liên châu lục
 - Đường giao thông liên đại dương
 - Đường giao thông liên vũ trụ
 - Đường giao thông liên không gian
 - Đường giao thông liên thời gian
 - Đường giao thông liên tâm linh
 - Đường giao thông liên vũ trụ
 - Đường giao thông liên không gian
 - Đường giao thông liên thời gian
 - Đường giao thông liên tâm linh